



DURAFLOOR

**BARRIER MATTING
& ENTRANCE
SOLUTIONS**



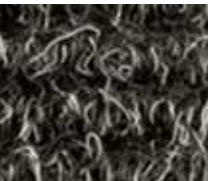
WHY USE AN ENTRANCE MATTING SYSTEM

Research proves that up to 90% of dirt in a building is 'walked in' or comes in via wheeled traffic. Reducing this ingress of dirt and moisture increases the life of floor coverings, helps maintain the attractiveness of a building and saves money. An effective matting system can also reduce slip accidents, providing for additional public safety.

Determining the best matting solution depends on traffic use and the external environment. Primary matting is often used in conjunction with secondary matting (barrier tiles) to provide a total matting solution.

ENTRAGUARD

A primary barrier, 100% aluminium matting system - combining textile or rubber wiper strips to meet internal and external doorway requirements for both dirt and moisture removal.



Absorber Profile



RubberProfile

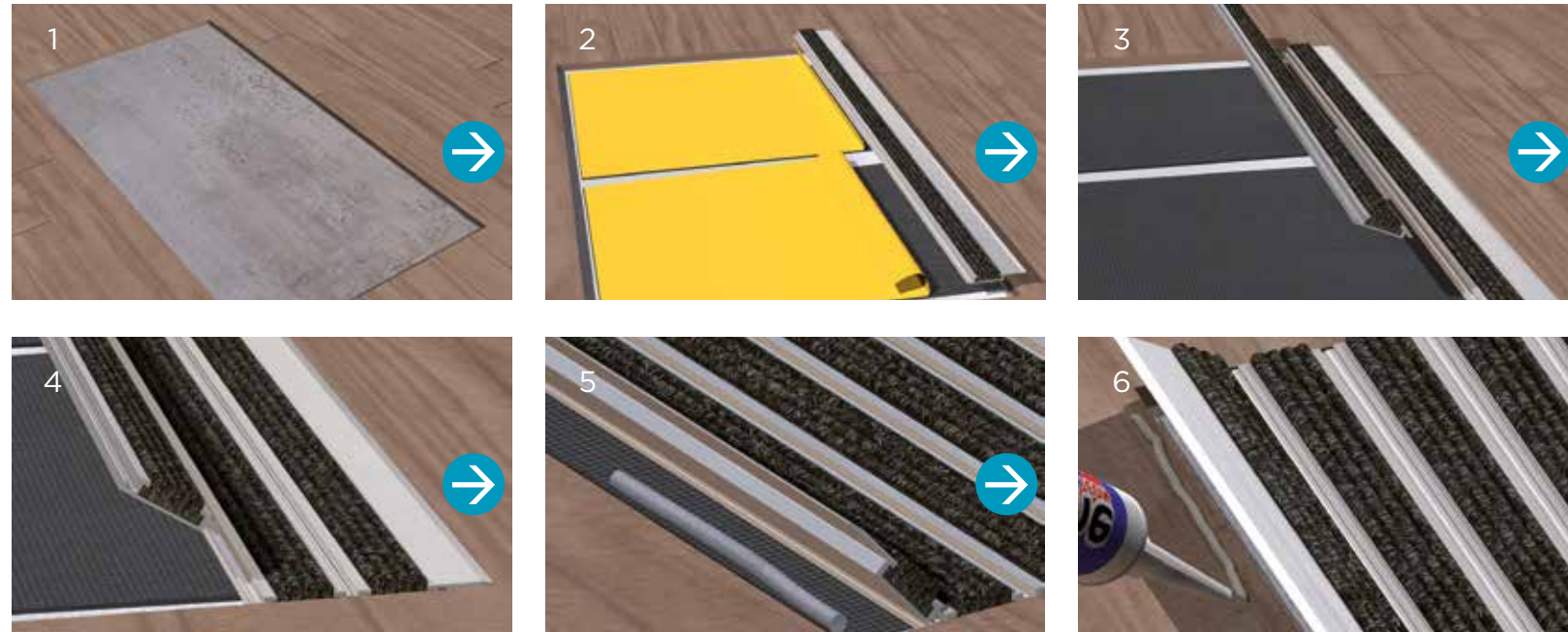


Elite Profile

- Saves time - very simple to install
- Increase profits - no special shaping or installation charges
- In stock for next day delivery

ENTRAGUARD

Easy Assembly



INSTRUCTIONS

- 1-2. Place the self-adhesive black foam strips parallel to each other with the adhesive part facing upwards. Peel off the protective paper by just a few centimetres. The exterior foam strips must be at a distance between 2-5 cm from the edge.
- 3-4. Keep placing the profiles down, clicking one into the next and securing them on to the black foam. These profiles can be cut to the matwell width or can be installed 'brickbond' to reduce wastage.
5. Continue the process until the last profile and adjust in the mat well. Then insert the foam tubes under the initial and final wings.
6. Fix to the floor with adhesive or silicone. If desired, the matting can be screwed to the floor (see Optional section).

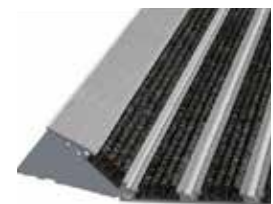
OPTIONAL



Retire partially or slide the finish strips. Drill the initial and final profile at both ends to fix securely to the floor.



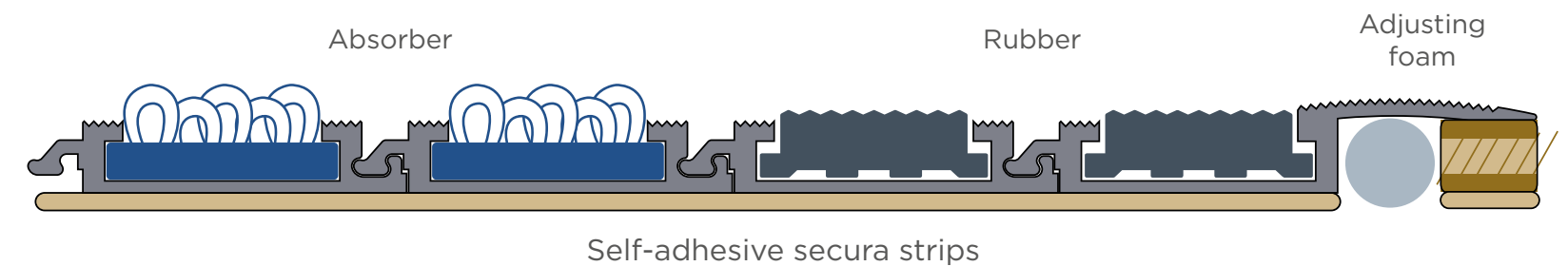
Screw to the floor and stick the finish strips to the aluminium profiles.



Entraguard is also available with a ramp section.

Simple, immediate installation on site for any matwell size or shape.

PRODUCT SPECIFICATION



Note: The profiles must be clean in order to be assembled properly. It may be necessary for more than one person to install large size mats (approx 1 person each 1.5m profile length). The surface where the matting is installed must be flat and uniform.

TECHNICAL SPECIFICATION

Height	9mm
Profiles per linear metre	30 units
Fire Rating	Rubber Dfl-S1, Other Bfl-S1
Resistance to vertical load	50KN
DDA Compliant	Suitable for wheelchair use
Profile width	33mm
Profile length	3000mm
Structure	100% aluminium - no PVC joining pieces
Grade	Aluminium alloy 6063T5

EASY MAINTENANCE

Regular vacuuming is essential to avoid build-up of soil.

Periodic professional cleaning is recommended. For a copy of our Maintenance Guide please contact our sales office.

GUARANTEE

EntraGuard is offered with a 10-year wear guarantee - for full guarantee details please contact our sales office.

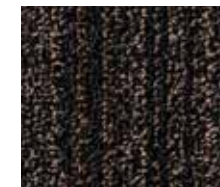


HEAVY CONTRACT BARRIER TILES

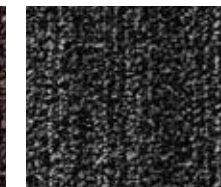
Heavy contract barrier tiles are designed to remove dirt and moisture to prevent ingress to adjacent floor coverings. They are ideal for heavy traffic areas such as reception areas and internal entrance ways.

The Duraflor ranges of barrier tiles are the perfect choice for busy offices and circulation areas.

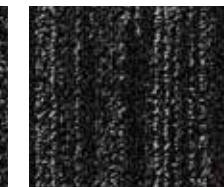
FRONTLINE



0820 Country Road

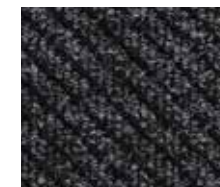


0810 Main Road

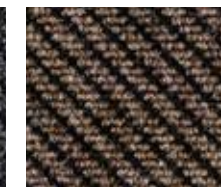


0830 Rail Road

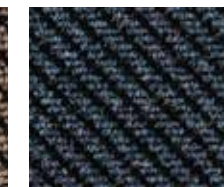
ROBUST



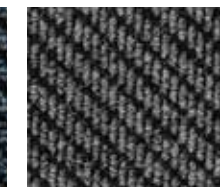
7281 Anthracite



7285 Coffee

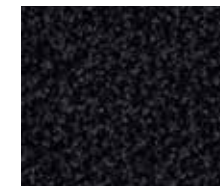


7276 Indigo

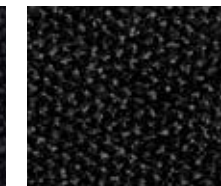


7280 Silver Grey

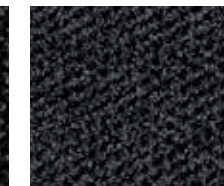
CHECKPOINT



7371 Shale



7369 Riverbank



7353 Outcrop

The advantages of barrier tiles

Reduces Soiling - incorporates a scraper fibre that effectively scrapes soiling from shoes, and reduces 'walked in' dirt

Longer Life - designed to give excellent performance in heavy traffic areas such as entrance halls and corridors

Enhance Interiors - attractive designs that complement modern interiors

Easy Installation

Ensure the subfloor is smooth, hard, dry and clean and that a damp proof membrane has been incorporated if required. Install using appropriate carpet tile tackifier. For a copy of our installation guide please contact our sales office.

Easy Maintenance

Regular vacuuming is essential to avoid build-up of soil. Periodic professional cleaning is recommended. For a copy of our Maintenance Guide please contact our sales office.

Product Specifications


Dimensions

 **Tile Size**
500 x 500mm

Frontline

 **Pile Weight**
740g/m²


 **Total Weight**
4700g/m²

 **Total Thickness**
7.2mm

Checkpoint

 **Pile Weight**
830g/m²


 **Total Weight**
3,910g/m²

 **Total Thickness**
8.2mm

Robust

 **Pile Weight**
1,150g/m²

 **Total Weight**
4,400g/m²

 **Total Thickness**
9.5mm

Construction

Backing
Bitumen Backed

Frontline

Pile Type
100% PA6 Aqualon HD

Checkpoint

Pile Type
100% Polyamide

Robust


Pile Type
100% Polypropylene

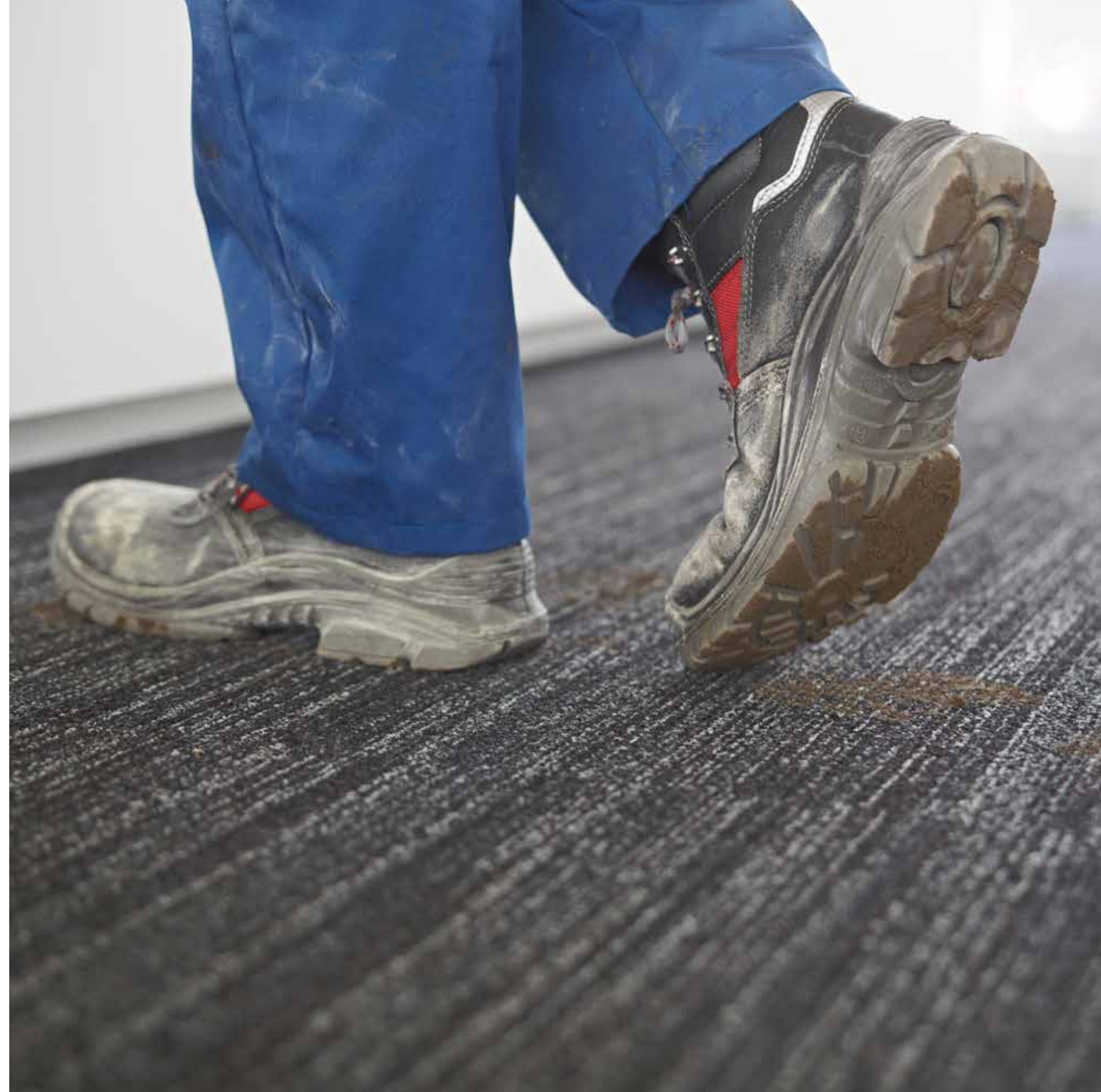
Technical Data

Frontline & Checkpoint

 **Fire Rating**
ISO 13501-1 Bfl-S1

Robust

 **Fire Rating**
EN 13297 Efl





Frontline Country Road



Robust Anthracite

01592 630 030
uksales@duraflor.com

DURAFLOOR.COM

All colours are for illustrative purposes only.
If colour choice is critical, please request a sample