



# DURAFLOR

## CUBISM


### Product Specifications

#### Dimensions

 **Tile Size**  
500 x 500mm

 **Total Weight**  
4,200g/m<sup>2</sup>

 **Pile Weight**  
620g/m<sup>2</sup>

 **Total Thickness**  
5.8mm

#### Construction


**Pile Type**  
100% Polyamide 6  
Solution Dyed Econyl


**Tuft Density**  
177,750/m<sup>2</sup>

#### Laying Pattern


Ashlar and Quarter Turn

#### Technical Data

 **Fire Rating**  
ISO 9239-1 Bfl-S1

 **Light Fastness**  
ISO 105 B02 >5

 **Antistatic**  
EN 6356 -0.1kV  
Antistatic

 **Castor Chair Test**  
EN985/A, continuous use

 **Wear Rating**  
BS EN 1307 33 Heavy Contract

#### Guarantee

15 years

**Colour Fastness (Rubbing)**  
ISO 105 x12 5

**Colour Fastness (Water)**  
ISO 105 E01 4

01592 630 030  
uksales@duraflor.com

DURAFLOOR.COM

All colours are for illustrative purposes only.  
If colour choice is critical, please request a sample



**CUBISM**  
heavy contract carpet tiles



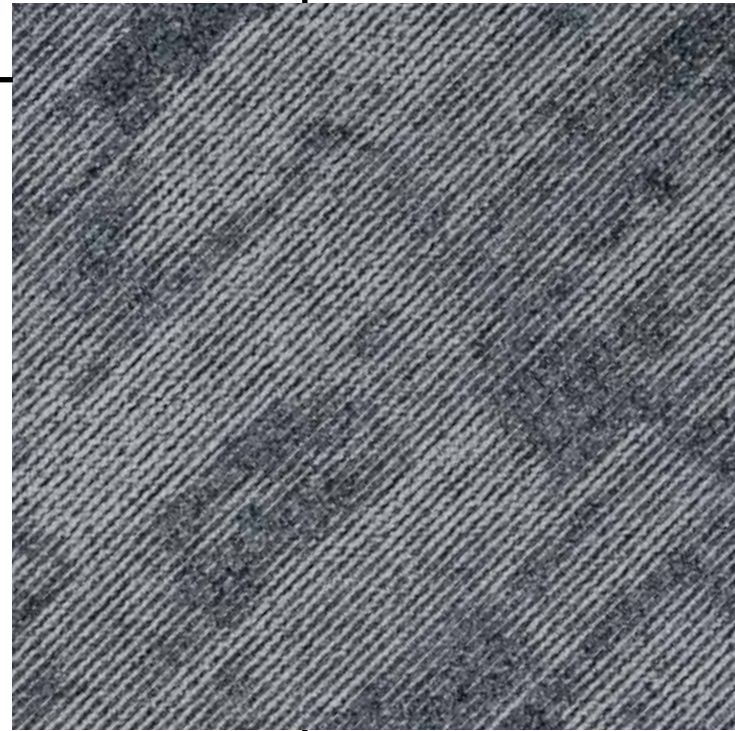
Klee Grey



Frida Chestnut

# CUBISM

Our modern twist on Cubism introduces more subtle effects, yet still plays with the geometric shapes that remain a timeless feature. In Cubism we combine luxury and style with the sustainability credentials that any modern office demands.



6710 Amaral Grey



6721 Cezanne Beige



6724 Frida Chestnut



6726 Mondrian Brown



6715 Klee Grey



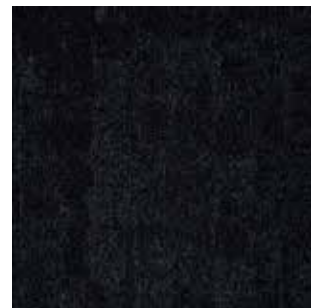
6713 Delaunay Teal



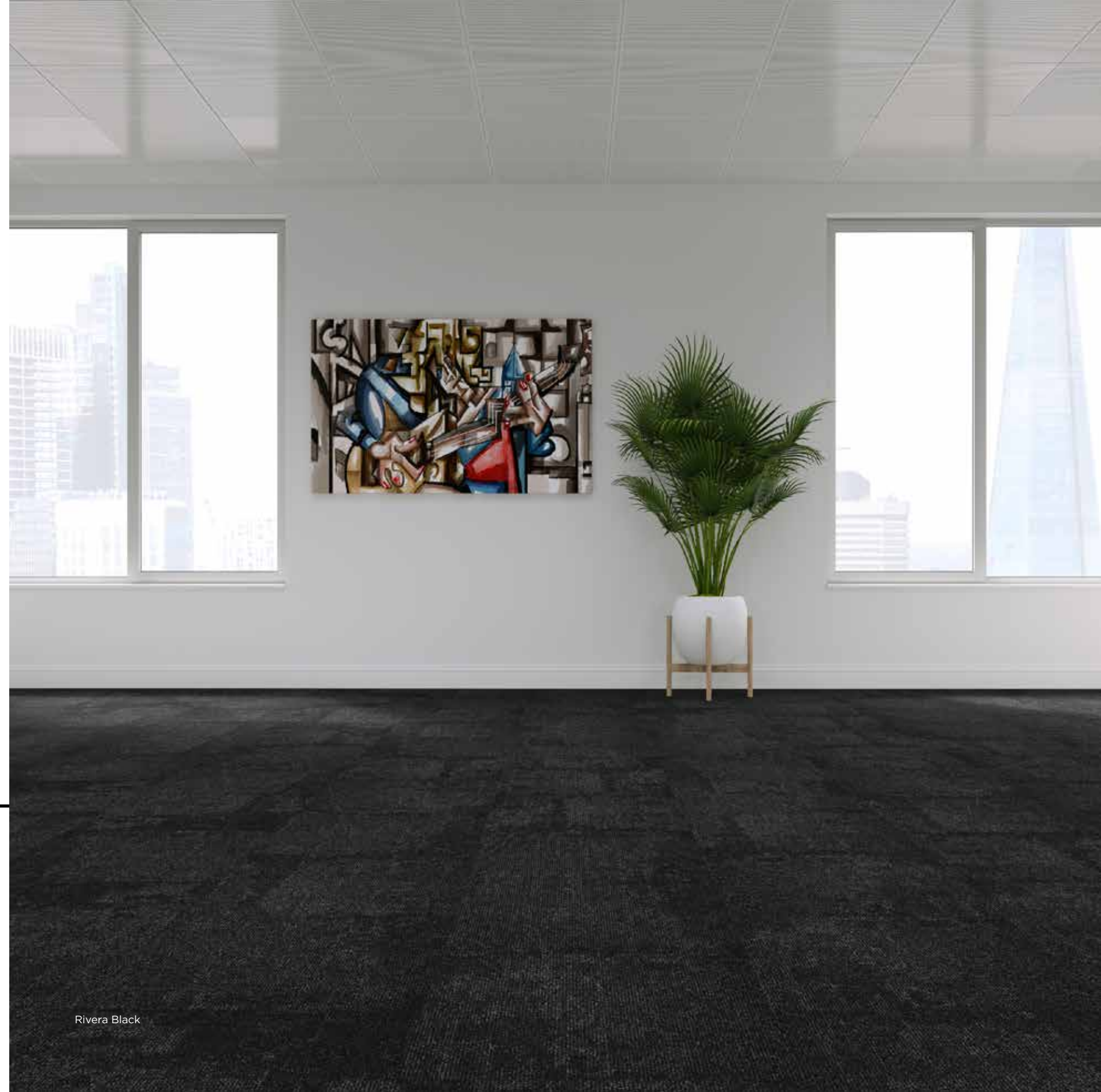
6716 Dali Sapphire



6718 Picasso Blue



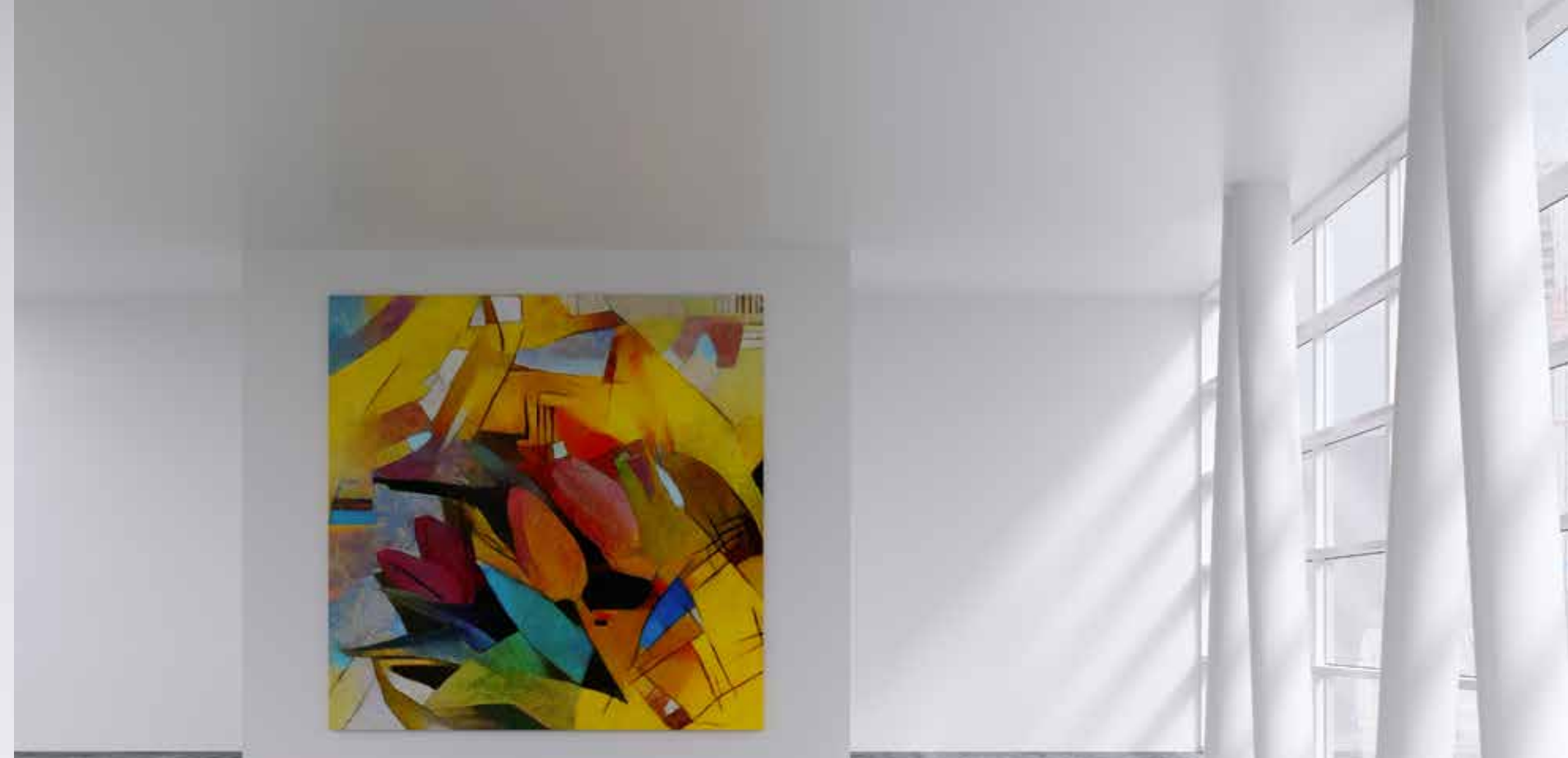
6719 Rivera Black



Rivera Black



Cezanne Beige



Delaunay Teal



Dali Sapphire



Amaral Grey